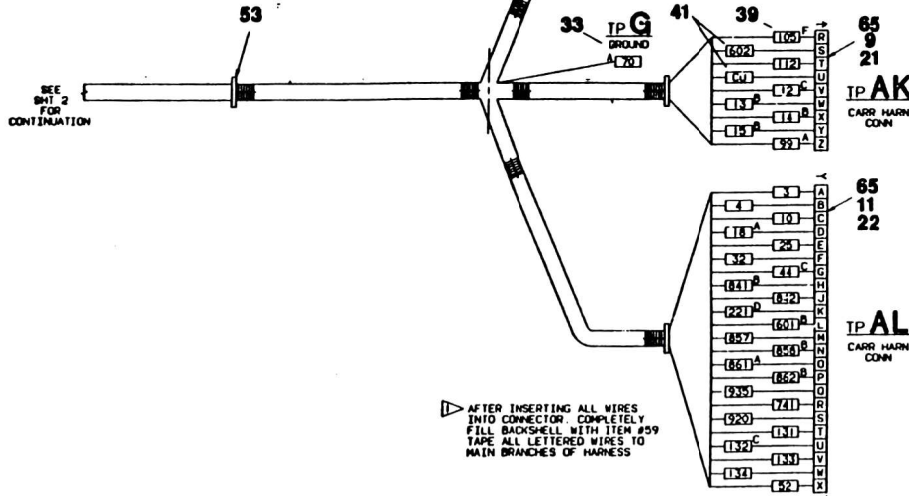
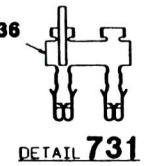
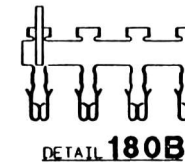
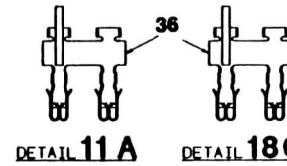
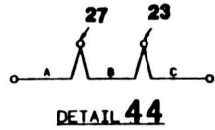
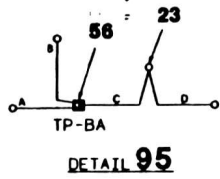
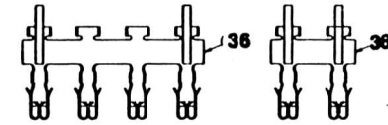
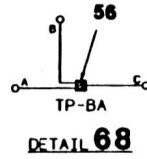
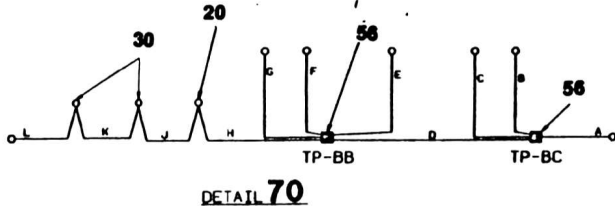
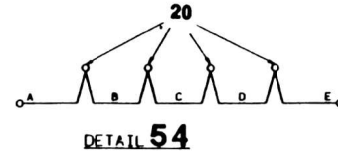
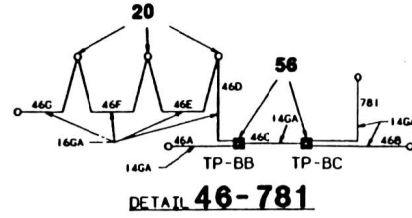
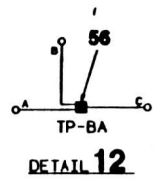
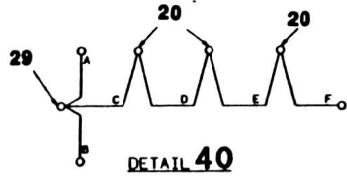
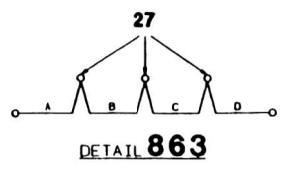
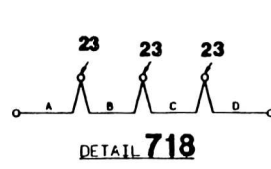
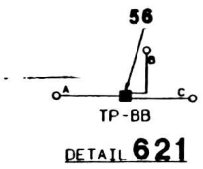
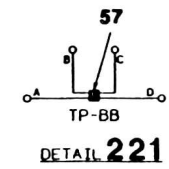
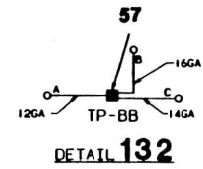


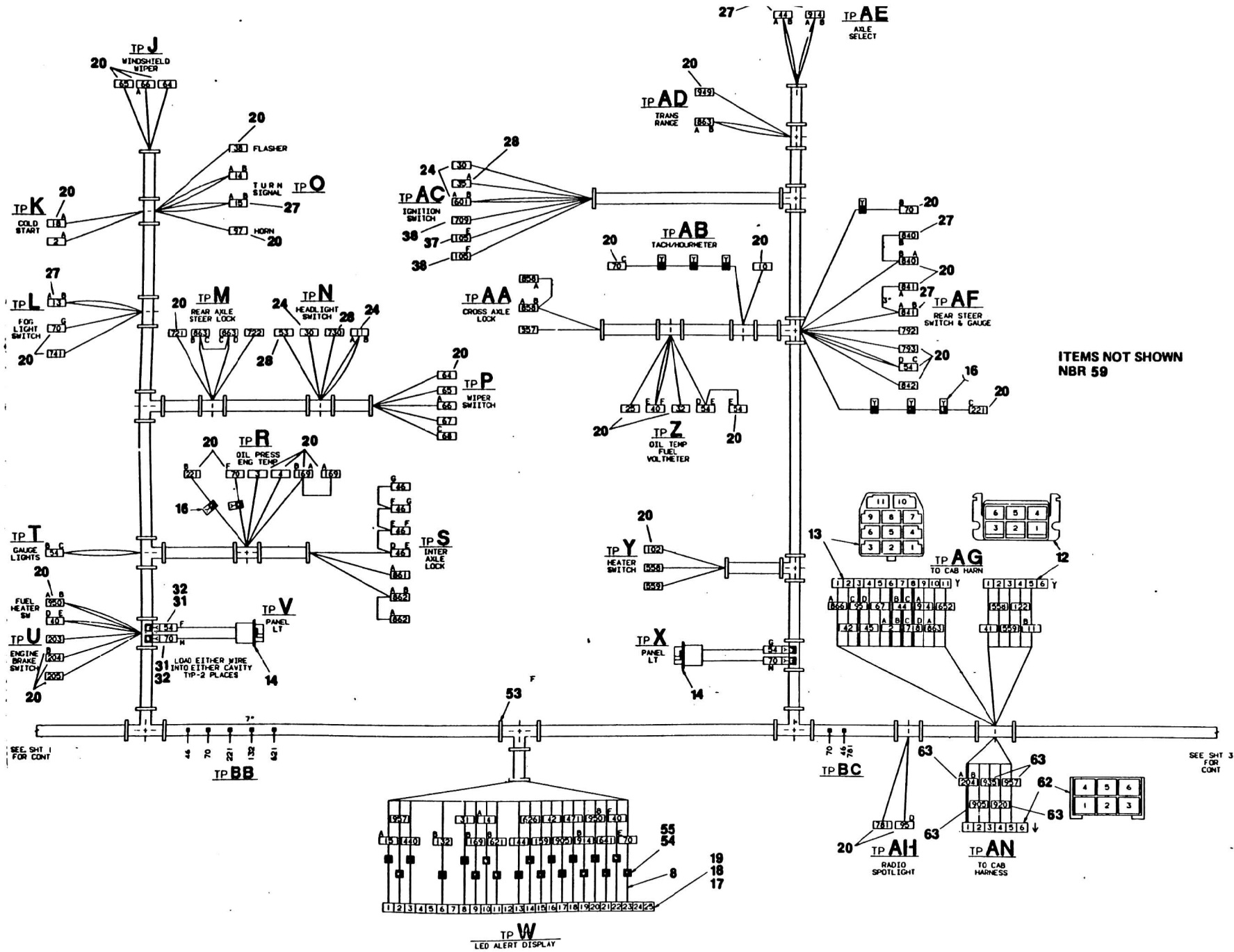
WIRE NO	COLOR	SIZE	LENGTH	TP	B/M	REMARKS	TP	B/M	REMARKS	
			FT.-IN		ITEM NO			ITEM NO		
31	WHITE	16	7 0 84	AJ	26	---	W	STRIP	SEE DWG	
41		14	5 0 60	AJ	26	---	W	STRIP	SEE DWG	
144		16	7 1 85	AJ	26	---	W	STRIP	SEE DWG	
189		16	7 1 85	AJ	26	---	W	STRIP	SEE DWG	
203		14	7 9 93	AJ	26	---	U	20	---	
206		14	7 9 93	AJ	26	---	U	20	---	
440		16	7 0 84	AJ	26	---	W	STRIP	SEE DWG	
471		16	7 0 84	AJ	26	---	W	STRIP	SEE DWG	
626		16	7 0 84	AJ	26	---	W	STRIP	SEE DWG	
721		14	8 2 98	AJ	26	---	M	20	---	
722		14	8 2 98	AJ	26	---	M	20	---	
792		14	6 7 79	AJ	26	---	AF	20	---	
793	WHITE	14	6 7 79	AJ	26	---	AF	20	---	
99A	WHITE	14	8 1 107	AK	21	---	B	30	---	
105F	WHITE	6	7 4 88	AK	39	---	AC	38	---	
112	WHITE	14	8 1 107	AK	21	---	B	30	---	
602	WHITE	10	7 10 94	AK	41	---	AK	30	---	
CU	WHITE	10	7 10 94	AK	41	---	AK	30	---	
3	WHITE	16	8 0 96	AL	22	---	R	20	---	
4		16	8 0 96	AL	22	---	R	20	---	
10		16	6 8 80	AL	22	---	AB	20	---	
18A		14	8 1 100	AL	22	---	Z	20	---	
25		16	7 0 84	AL	22	---	Z	20	---	
32		16	7 0 84	AL	22	---	Z	20	---	
52		14	9 4 112	AL	22	---	F	25	---	
131		14	9 4 112	AL	22	---	F	25	---	
133		14	9 4 112	AL	22	---	F	25	---	
134		14	9 3 111	AL	22	---	F	25	---	
741		14	8 2 98	AL	22	---	L	20	---	
842		16	6 6 78	AL	22	---	AF	20	---	
857		14	7 2 86	AL	22	---	AA	20	---	
861A		14	8 2 98	AL	22	---	S	20	---	
920		14	5 0 60	AL	22	---	AH	63	---	
925	WHITE	14	5 0 60	AL	22	---	AH	63	---	
2A	WHITE	14	5 4 64	K	20	---	AG	STRIP	CRIMP W/20	
2B		14	5 0 60	AJ	26	---	AG	23	CRIMP W/2A	
11A		12	3 6 42	F	STRIP	SEE DETAIL	N	STRIP	CRIMP W/10	
11B		12	5 6 65	N	24	---	CRIMP W/11A	AC	23	---
12A		14	1 7 19	F	25	---	BA	STRIP	SEE DETAIL	
12B		14	5 3 63	C	20	---	BA	STRIP	SEE DETAIL	
12C		14	7 8 92	AK	21	---	BA	STRIP	SEE DETAIL	
13A		14	3 3 39	F	25	---	L	STRIP	CRIMP W/10	
13B		14	8 2 98	AK	21	---	L	27	CRIMP W/13A	
14A		14	2 7 31	D	STRIP	CRIMP W/14B	N	STRIP	SEE DWG	
14B		14	8 7 103	O	27	---	AK	21	---	
15A		14	2 7 31	O	STRIP	CRIMP W/10	M	STRIP	SEE DWG	
15B		14	8 7 103	O	27	---	AK	21	---	
30	WHITE	12	4 5 53	N	24	---	AC	24	---	
35A	YELLOW	16	4 1 59	A	STRIP	CRIMP W/20B	AC	28	---	
30B	YELLOW	16	1 2 14	A	20	---	CRIMP W/30A	E	STRIP	---
38	WHITE	14	3 8 48	F	25	---	O	20	---	
40A		16	0 8 8	F	25	---	O	STRIP	SEE DETAIL	
40B		16	0 5 5	E	STRIP	---	O	STRIP	SEE DETAIL	
40C		16	2 6 30	H	STRIP	SEE DETAIL	D	STRIP	SEE DETAIL	
40D		16	1 5 17	H	STRIP	SEE DETAIL	U	STRIP	SEE DETAIL	
40E		16	3 5 41	Z	STRIP	SEE DETAIL	U	STRIP	SEE DETAIL	
40F		16	2 8 32	Z	STRIP	SEE DETAIL	U	STRIP	SEE DWG	
42		16	4 10 48	M	STRIP	SEE DWG	AG	34	---	
44A		14	5 1 61	F	25	---	AE	27	CRIMP W/44B	
44B		14	4 2 50	AE	STRIP	SEE DETAIL	AG	STRIP	SEE DETAIL	
44C		14	5 0 60	AL	22	---	AG	30	---	
45		14	6 9 81	C	60	---	AG	30	---	
46A		14	2 3 27	F	25	---	BB	STRIP	SEE DETAIL	
46B		14	5 6 66	AJ	26	---	BC	STRIP	SEE DETAIL	
46C		14	1 6 18	BB	STRIP	SEE DETAIL	BC	STRIP	SEE DETAIL	
46D		16	1 2 14	S	STRIP	SEE DETAIL	BC	STRIP	SEE DETAIL	
46E		16	0 3 3	S	STRIP	SEE DETAIL	S	STRIP	SEE DETAIL	
46F		16	0 4 4	S	STRIP	SEE DETAIL	S	STRIP	SEE DETAIL	
46G	WHITE	16	0 3 3	S	20	---	S	STRIP	SEE DETAIL	
53	YELLOW	16	3 7 43	F	25	---	N	28	---	
54A	WHITE	16	2 6 30	F	25	---	H	STRIP	SEE DETAIL	
54B		16	1 5 17	H	STRIP	SEE DETAIL	T	STRIP	SEE DETAIL	
54C		16	2 1 13	T	STRIP	SEE DETAIL	AF	STRIP	SEE DETAIL	
54D		16	1 0 12	AF	STRIP	SEE DETAIL	Z	STRIP	SEE DETAIL	
54E		16	0 3 3	Z	STRIP	SEE DETAIL	Z	20	---	
54F		16	0 6 6	V	31	---	X	32	---	
54G		16	0 6 6	X	31	---	X	32	---	
64		14	2 5 29	J	20	---	P	20	---	
65		14	2 5 29	J	20	---	P	20	---	
66A		14	2 5 29	J	20	---	P	20	---	
67		14	5 7 67	F	25	---	BA	STRIP	SEE DETAIL	
68A		14	1 5 17	F	20	---	BA	STRIP	SEE DETAIL	
68B		14	1 1 37	C	20	---	BA	STRIP	SEE DETAIL	
68C		14	2 3 27	P	20	---	BA	STRIP	SEE DETAIL	
70A		16	5 9 69	G	33	---	BC	STRIP	SEE DETAIL	
70B		16	1 3 15	AF	20	---	BC	STRIP	SEE DETAIL	
70C	WHITE	16	2 4 28	AB	20	---	BC	STRIP	SEE DETAIL	

WIRE NO	COLOR	SIZE	LENGTH	TP	B/M	REMARKS	TP	B/M	REMARKS	
			FT.-IN		ITEM NO			ITEM NO		
700	WHITE	16	1 4 16	BC	STRIP	SEE DETAIL	BB	STRIP	SEE DETAIL	
70E		16	1 0 12	W	STRIP	SEE DWG	BB	STRIP	SEE DETAIL	
70F		16	1 4 16	R	20	---	BB	STRIP	SEE DETAIL	
70G		16	1 3 15	L	20	---	BB	STRIP	SEE DETAIL	
70H		16	0 1 11	H	STRIP	SEE DETAIL	BB	STRIP	SEE DETAIL	
70K		16	2 1 25	H	STRIP	SEE DETAIL	B	STRIP	SEE DETAIL	
70L		16	0 4 4	B	STRIP	SEE DETAIL	B	STRIP	SEE DETAIL	
70M		16	0 10 10	A	20	---	B	STRIP	SEE DETAIL	
70N		16	0 6 6	V	31	---	V	32	---	
70O		16	0 6 6	X	31	---	X	32	---	
90A		14	1 5 18	F	25	---	BA	STRIP	SEE DETAIL	
90B		14	2 0 24	C	60	---	BA	STRIP	SEE DETAIL	
95C		14	4 9 57	AG	STRIP	SEE DETAIL	BA	STRIP	SEE DETAIL	
95D		14	5 6 66	AM	20	---	AG	STRIP	SEE DETAIL	
97		16	3 4 40	B	34	---	O	20	---	
98A		14	1 3 15	F	25	---	B	STRIP	CRIMP W/98B	
98B		14	0 4 4	B	30	---	B	23	---	
102		14	4 5 53	F	25	---	Y	20	---	
105A		10	0 7 7	A	24	---	F	STRIP	SEE DETAIL	
105B		10	0 6 6	F	STRIP	SEE DETAIL	F	STRIP	SEE DETAIL	
105C	WHITE	14	1 1 13	F	STRIP	SEE DETAIL	B	30	---	
105E	YELLOW	8	4 1 59	A	37	---	AC	37	---	
123	WHITE	12	2 7 31	F	STRIP	SEE DETAIL	AG	23	---	
132A		12	2 7 31	F	35	---	BB	STRIP	SEE DETAIL	
132B		16	0 10 10	W	STRIP	SEE DWG	BB	STRIP	SEE DETAIL	
132C		14	6 9 81	AL	22	---	BB	STRIP	SEE DETAIL	
169A		16	0 5 5	R	20	---	R	STRIP	CRIMP W/169B	
169B		16	2 1 25	M	STRIP	SEE DWG	R	20	---	
180A		12	0 8 8	A	24	---	F	STRIP	SEE DETAIL	
180B		12	0 7 7	A	24	---	F	STRIP	SEE DETAIL	
204A		14	5 0 60	AJ	26	---	AN	STRIP	CRIMP W/204B	
204B		14	4 9 57	U	20	---	AN	64	CRIMP W/204A	
221A		14	2 8 32	E	STRIP	---	BB	STRIP	SEE DETAIL	
221B		14	0 5 17	R	20	---	BB	STRIP	SEE DETAIL	
221C		14	3 4 40	AF	20	---	BB	STRIP	SEE DETAIL	
221D		14	6 10 82	AL	22	---	BB	STRIP	SEE DETAIL	
558		14	3 6 42	Y	20	---	AG	30	---	
559		14	3 6 42	Y	20	---	AG	30	---	
601A		16	5 5 65	E	STRIP	---	AC	STRIP	CRIMP W/601B	
601B		14	7 4 88	AL	22	---	AC	24	---	
621A		16	3 1 37	E	STRIP	---	BB	STRIP	SEE DETAIL	
621B		16	0 9 9	W	STRIP	SEE DWG	BB	STRIP	SEE DETAIL	
621C		16	6 8 80	AJ	26	---	BB	STRIP	SEE DETAIL	
641		16	3 5 41	D	40	---	M	STRIP	---	
652		14	6 2 74	F	25	---	AG	30	---	
709		14	5 4 64	F	25	---	AC	28	---	
718A		14	1 6 18	E	STRIP	---	B	STRIP	SEE DETAIL	
718B		14	0 4 4	B	STRIP	SEE DETAIL	B	STRIP	SEE DETAIL	
718C		14	5 1 11	71	AG	STRIP	SEE DETAIL	B	STRIP	SEE DETAIL
718D		14	5 0 60	AG	STRIP	SEE DETAIL	AJ	26	---	
730		14	3 2 38	B	30	---	N	28	---	
731		14	1 2 14	B	30	---	F	STRIP	SEE DETAIL	
781		14	1 2 14	BC	STRIP	SEE DETAIL	AH	20	---	
804		16	1 4 16	B	34	---	E	STRIP	---	
810		14	1 1 13	B	30	---	F	25	---	
840A		14	4 2 50	B	30	---	AF	STRIP	CRIMP W/840B	
840B		14	0 3 3	AF	20	---	AF	27	---	
841A		14	0 3 3	AF	20	---	AF	27	---	
841B		14	6 7 79	AL	22	---	AF	27	---	
858A		14	0 3 3	AA	20	---	AA	STRIP	CRIMP W/858B	
858B		14	7 2 86	AL	22	---	AA	27	---	
862A		14	0 3 3	S	20	---	S	STRIP	CRIMP W/862B	
862B		14	8 2 98	AL	22	---	S	27	---	
863A		14	3 1 11	AD	STRIP	SEE DETAIL	AG	30	---	
863B		14	3 1 11	AD	STRIP	SEE DETAIL	AD	STRIP	SEE DETAIL	
863C		14	0 3 3	M	STRIP	SEE DETAIL	M	STRIP	SEE DETAIL	
863D		14	2 1 13	B	30	---	M	STRIP	SEE DETAIL	
864A		14	2 4 28	F	25	---	H	STRIP	CRIMP W/864B	
864B		14	7 10 94	AJ	26	---	M	27	---	
866A		14	6 4 76	F	35	---	AG	23	---	
914A		14	4 2 50	AG	30	---	AE	STRIP	CRIMP W/914B	
914B		16	2 1 13	M	STRIP	SEE DWG	AE	27	---	
944		16	1 8 20	B	34	---	E	STRIP	---	
949		14	5 2 62	E	STRIP	---	AD	20	---	
950A		14	7 9 93	U	STRIP	SEE DETAIL	AJ	26	---	
950B										



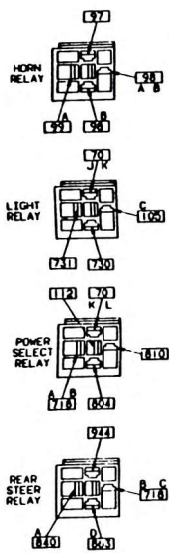
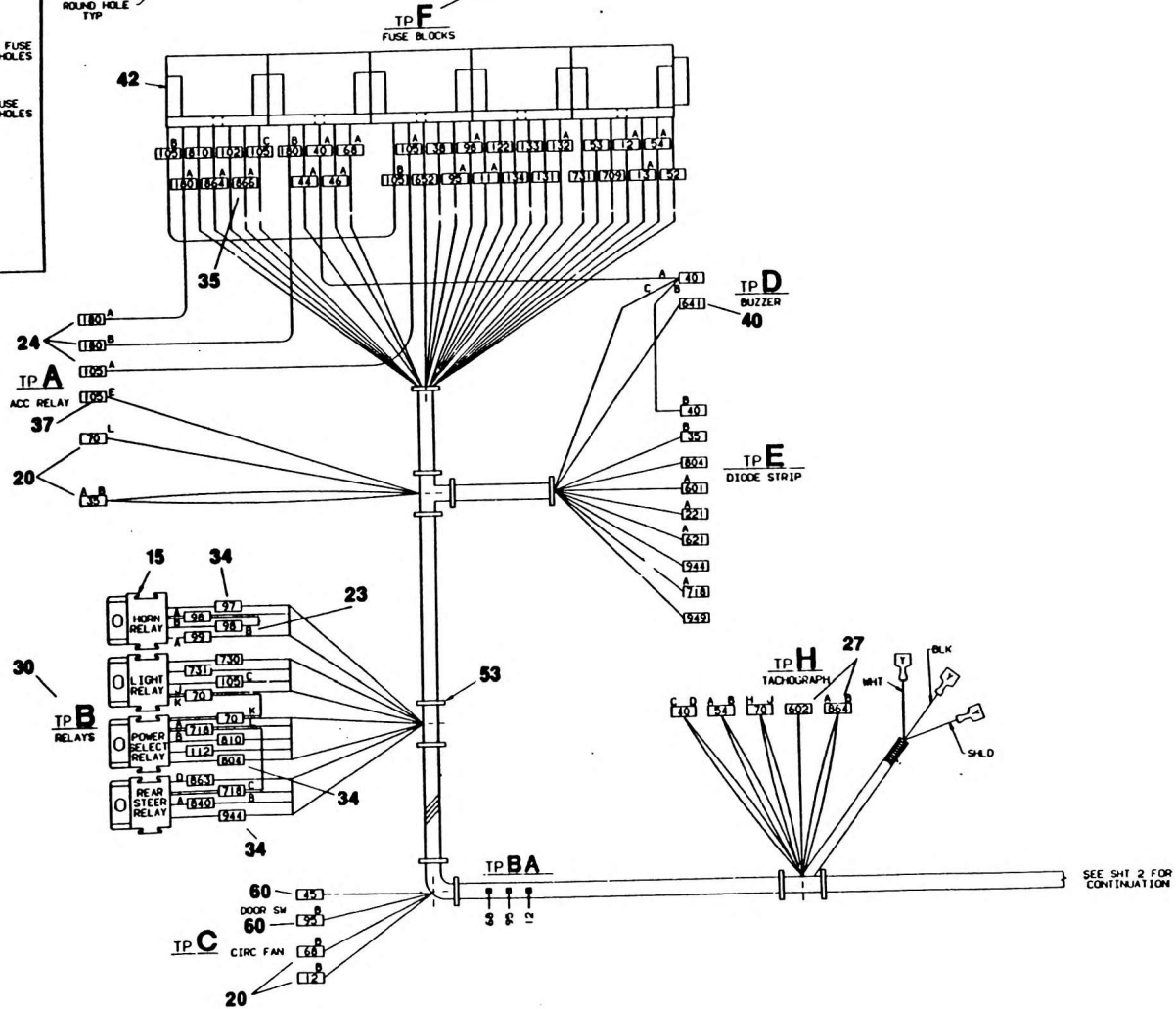
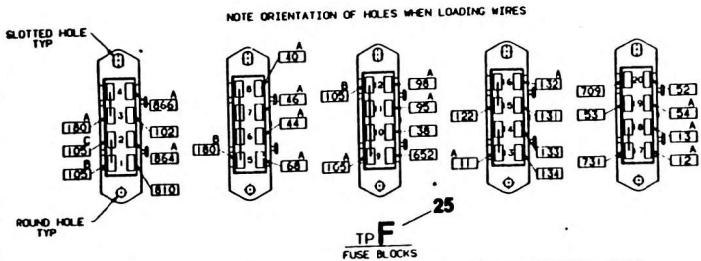
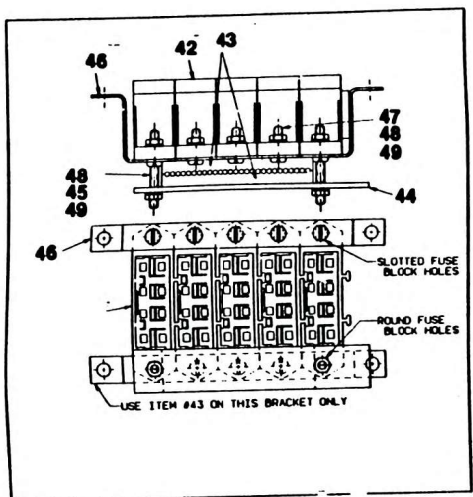
▲ AFTER INSERTING ALL WIRES INTO CONNECTOR, COMPLETELY FILL BACKSHELL WITH ITEM #59 TAPE ALL LETTERED WIRES TO MAIN BRANCHES OF HARNESS





ITEMS NOT SHOWN
NBR 59

SEE SH 3
FOR CONT



SEE SH 2 FOR CONTINUATION